

Precise approach
for a perfect space

DEXO

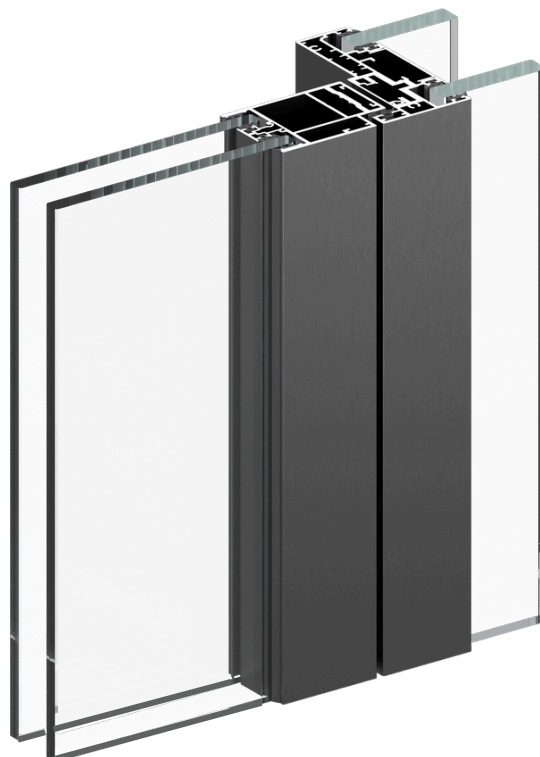


Glazing: $R_w = 44-52$ dB
Doors: $R_w = 35-43$ dB

Glazed framed doors Lumio

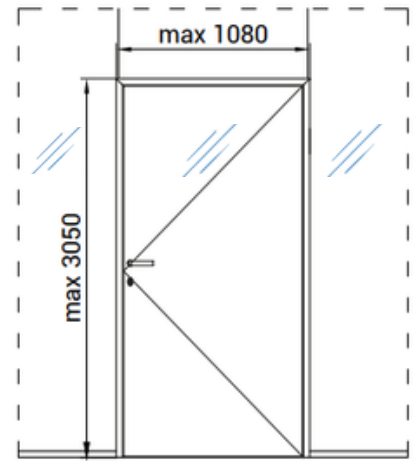
Lumio glazed doors in an aluminum frame with single or double glazing stand out for their clean design, high aesthetic quality, and excellent acoustics.

- ✘ Universal installation method for any type of glazed wall with single or double glazing.
- ✘ The double-glazing option provides a very high level of sound insulation, R_w up to 43 dB.
- ✘ The narrow aluminum door frame, only 68 mm wide, creates a light and elegant impression and perfectly matches the fixed glazing profiles.
- ✘ Aluminum profiles can be selected from a wide range of colors in anodized or powder-coated finishes, and the seals can be matched to the chosen color.



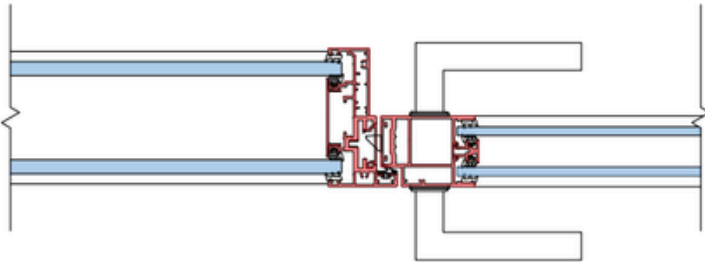
Technical description of doors:

Durability	class 6 (200,000 cycles)
Maximum height	3050 mm
Maximum width	1080 mm
Sound insulation	Rw = 35-40 dB
Ac. treatment - sound insulation	Rw = 40 dB, 42 dB, 43 dB
Surface finish	anodized aluminum / RAL / NCS
Smoke tightness	yes

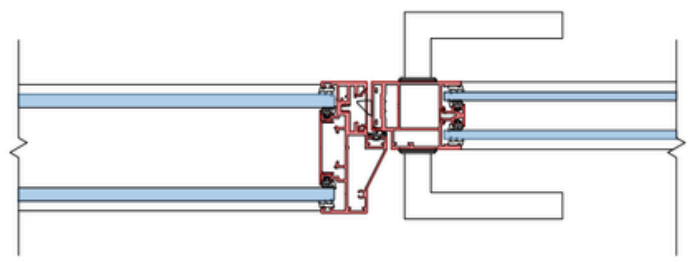


Door types:

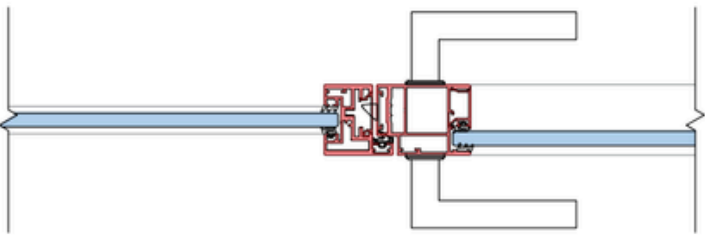
Reversible in double glazing



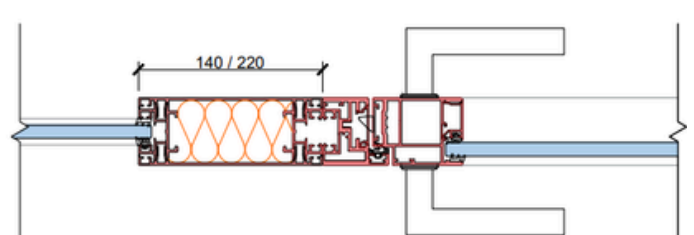
Standard in double glazing



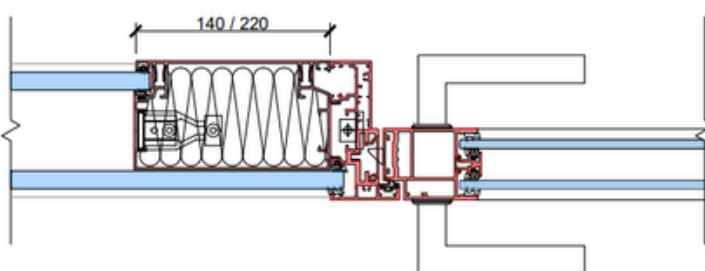
Standard in single glazing



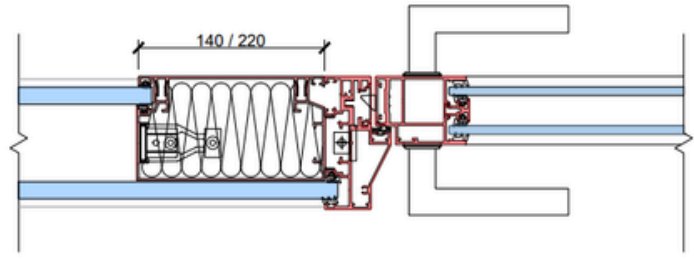
Standard in single glazing with installation panel



Reversible in double glazing with installation panel

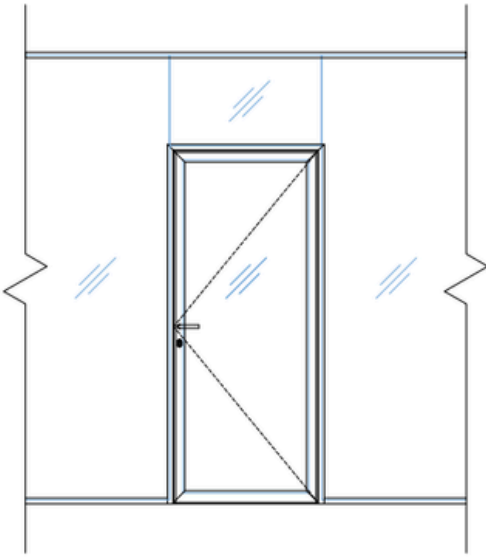


Standard in double glazing with installation panel

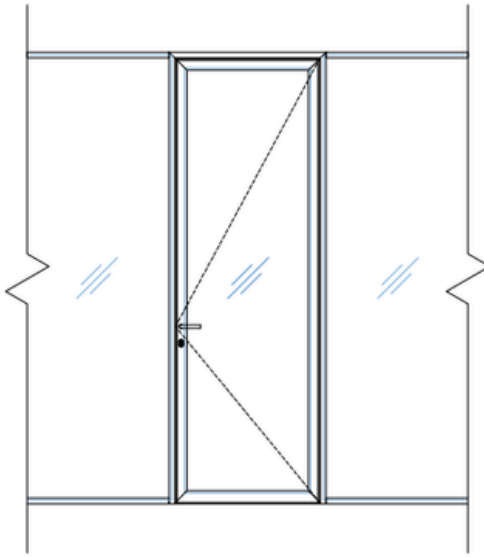


Basic types of Lumio glazed doors

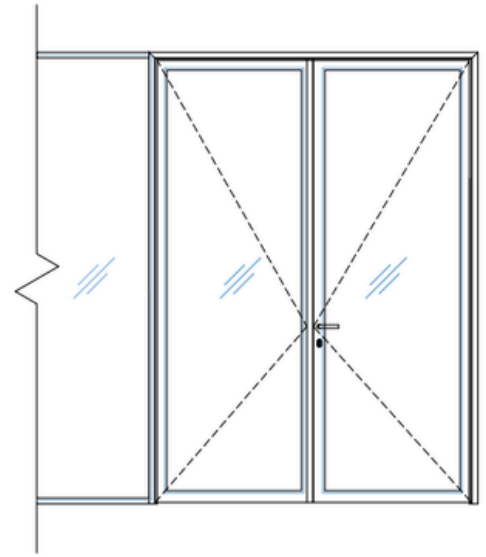
1. Standard



2. High

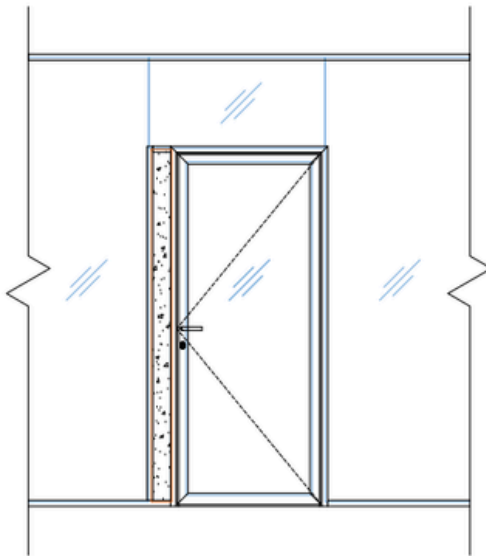


3. Double-leaf

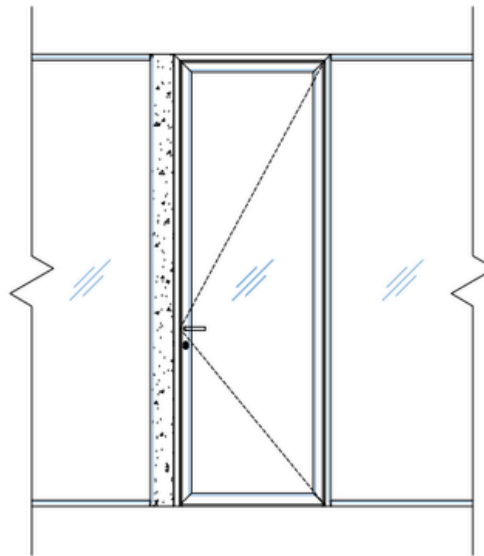


With installation panel:

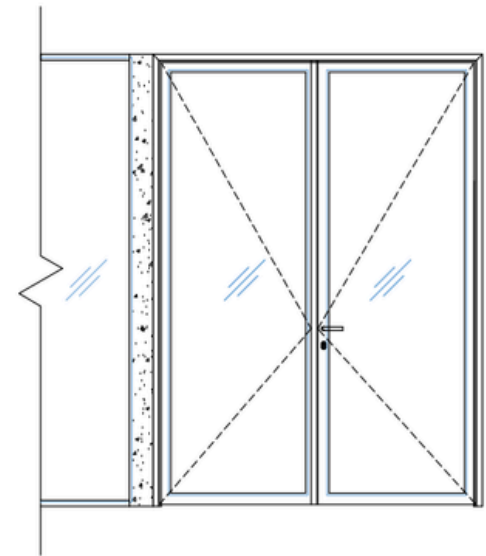
4. Standard



5. High

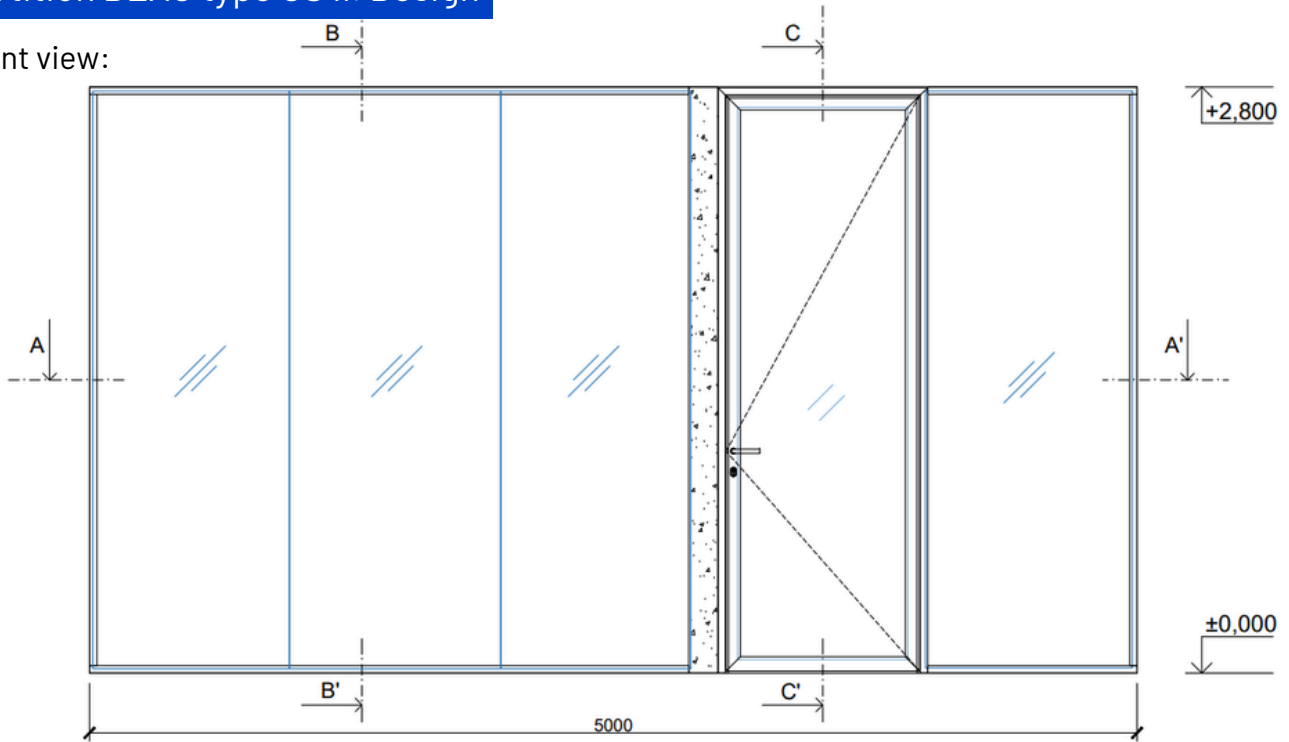


6. Double-leaf



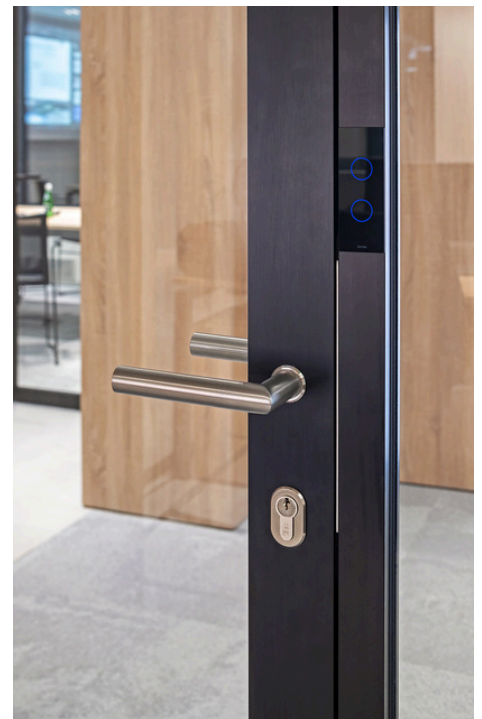
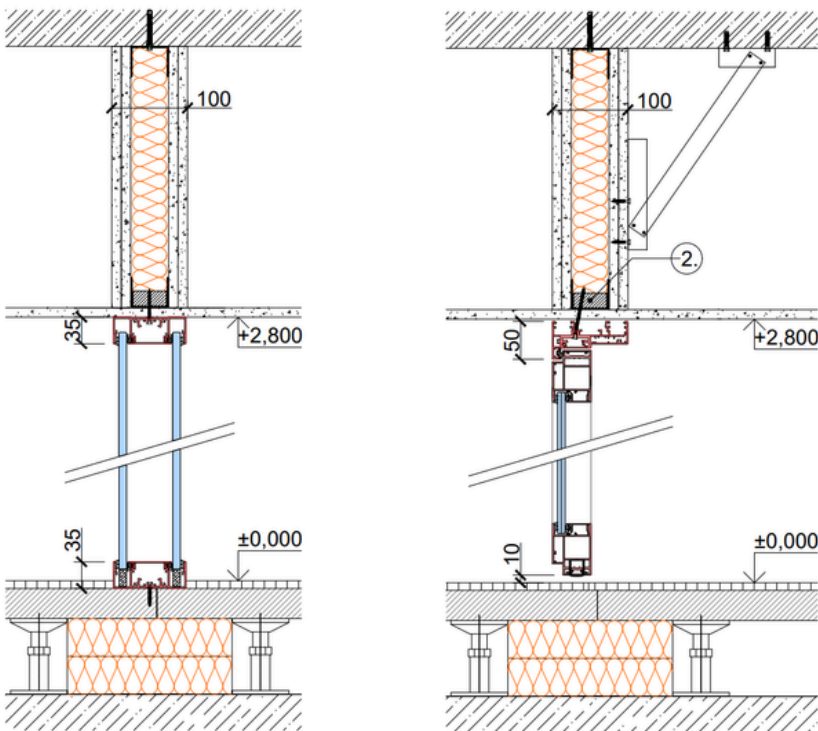
Partition DEX0 type GS II. Design

Front view:

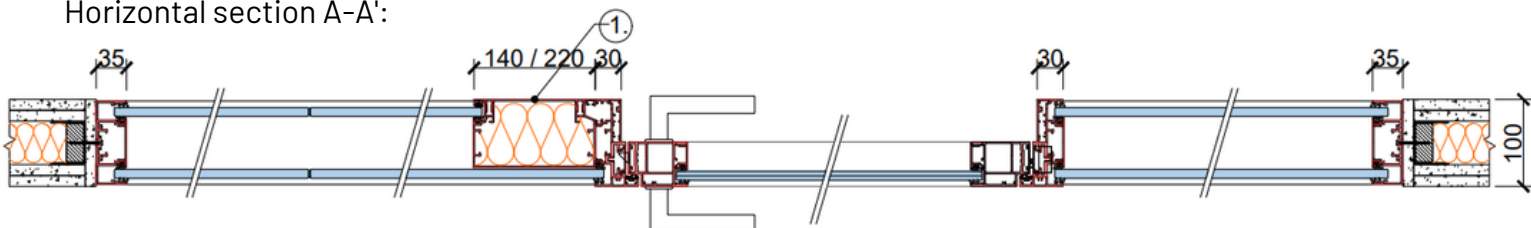


Vertical section: B-B':



C-C':



Horizontal section A-A':



Description

-  double glazing, $R_w = 47-52$ dB
-  double glazing, $R_w = 40$ dB, 42 dB or 43 dB
- ① front system profile/removable cover, full wall height (for possible future service)
- ② in the case of full-height doors, timber reinforcement is required + diagonal bracing at the gypsum board

× Lumio doors with double glazing



× Lumio doors with single glazing



Single-leaf framed doors

Glazed acoustic partitions type Design



Curved wall with information tablet



Double-leaf reversible framed doors



Double-leaf standard framed doors

